

FAB-M-124-5
PROVIDENCE, R. I.
CITY ENGINEER'S OFFICE.
STREET LINE DEPT.

PLAT OF
GOULD'S LANE

DECLARED A PUBLIC HIGHWAY

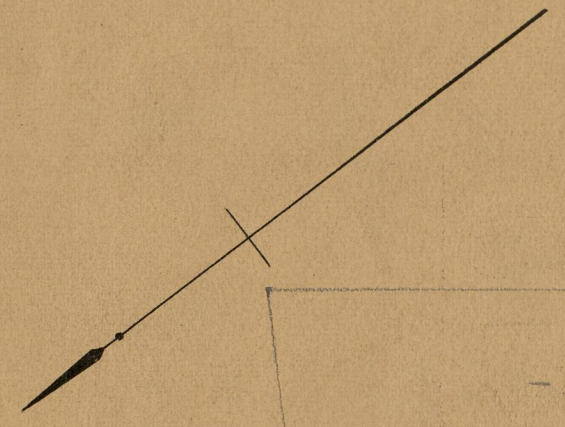
BY THE
BOARD OF ALDERMEN

Changed to Gould Street.

May 25, 1891

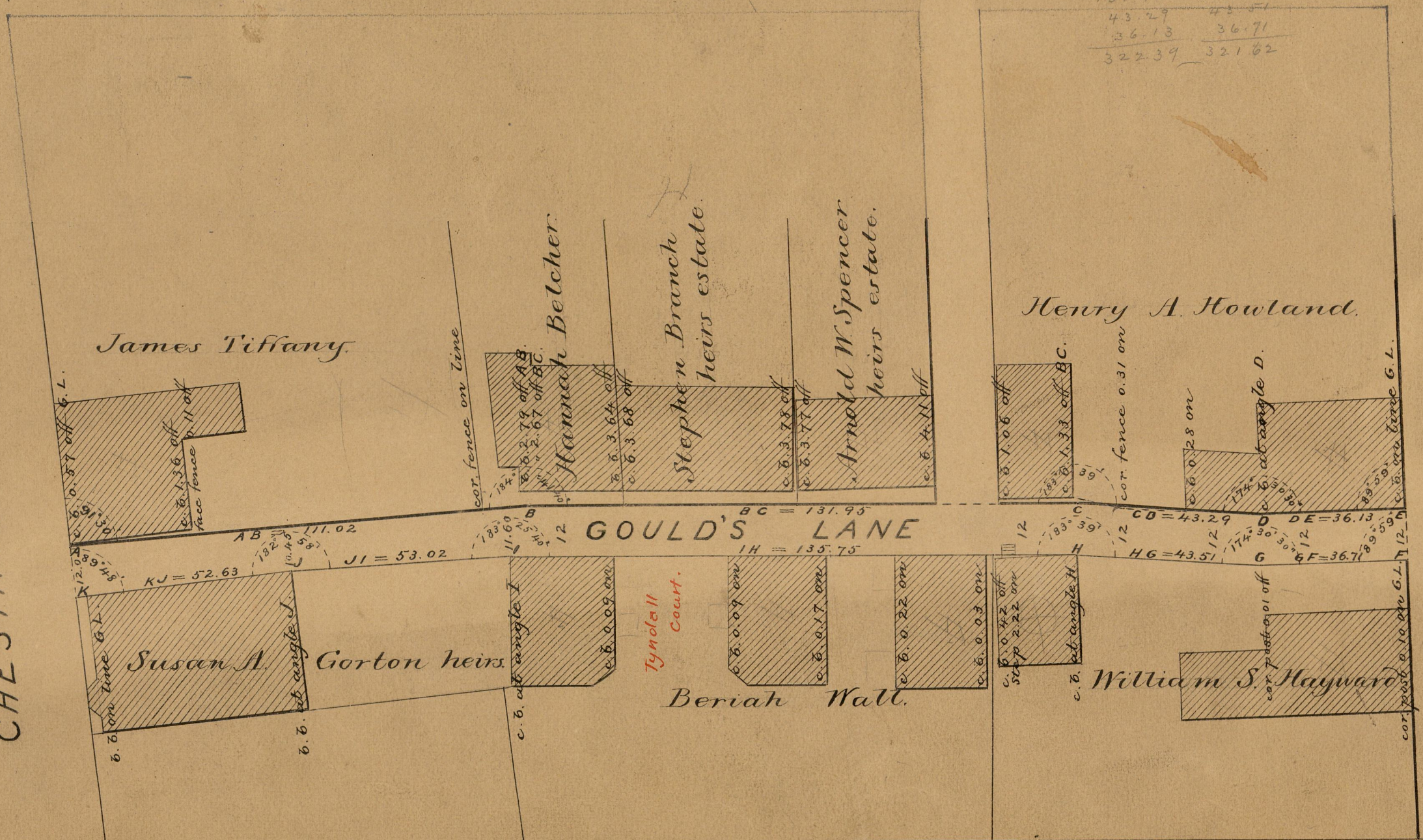
SCALE 30 FEET PER INCH.

116.62	52.63
131.95	53.02
43.29	42.51
36.13	36.71
322.39	321.62



CHESTNUT STREET

CLAVERICK STREET



83
A69

83
A69

OFFICE No.	9431
DRAWER	83
SHEET	A-69